

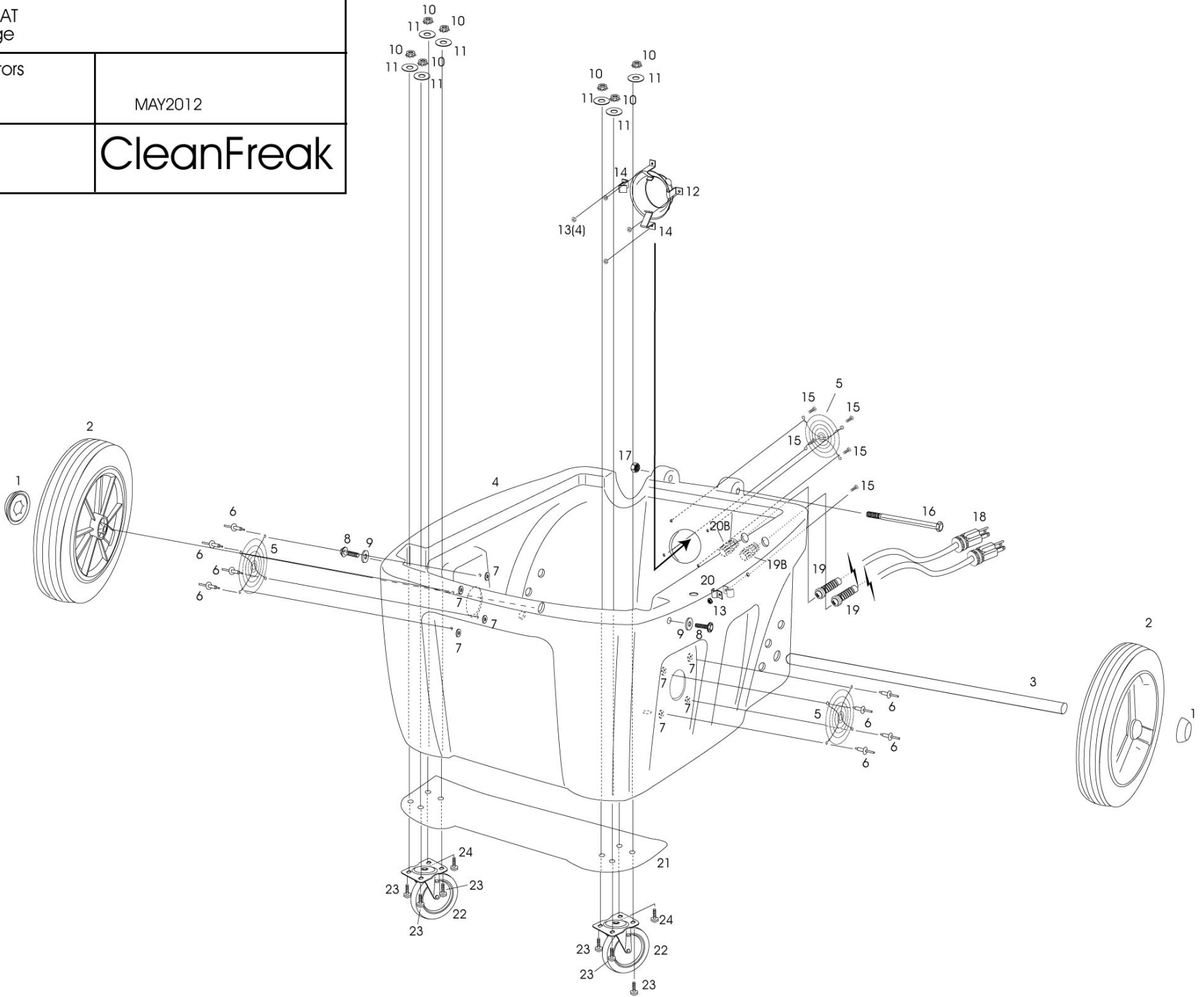
CF-25XG-HEAT
housing page

2-2 vac motors
500 psi
H35 or H39

MAY2012

CF

CleanFreak



Note: model after 03/08

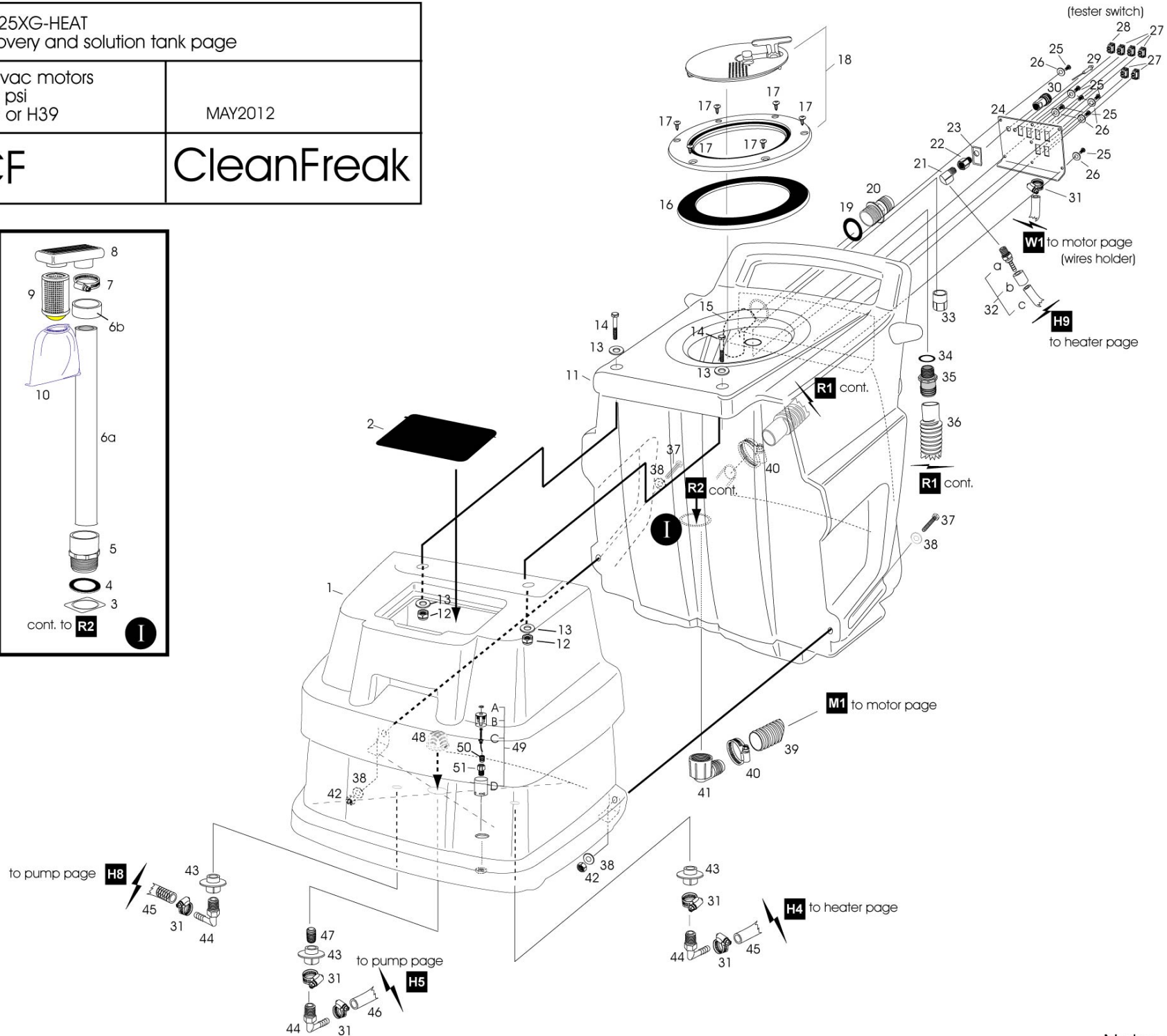
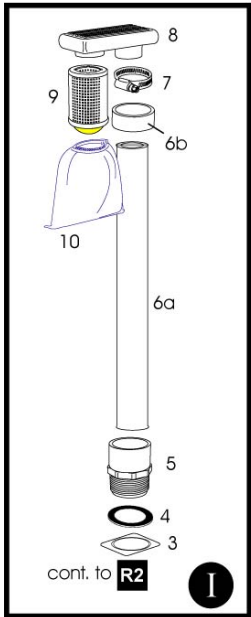
CF-25XG-HEAT
 recovery and solution tank page

2-2 vac motors
 500 psi
 H35 or H39

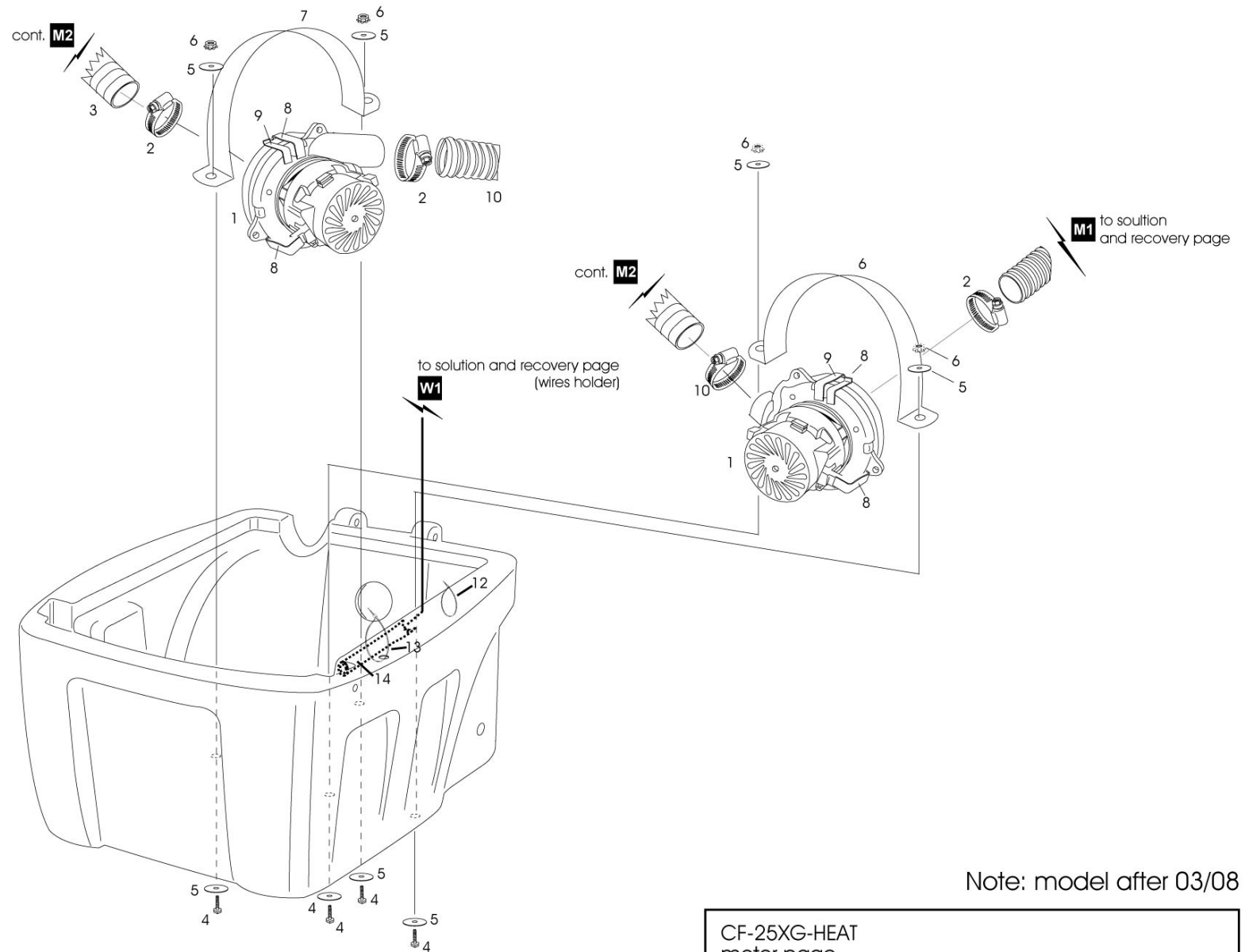
MAY2012

CF

CleanFreak



Note: model after 03/08

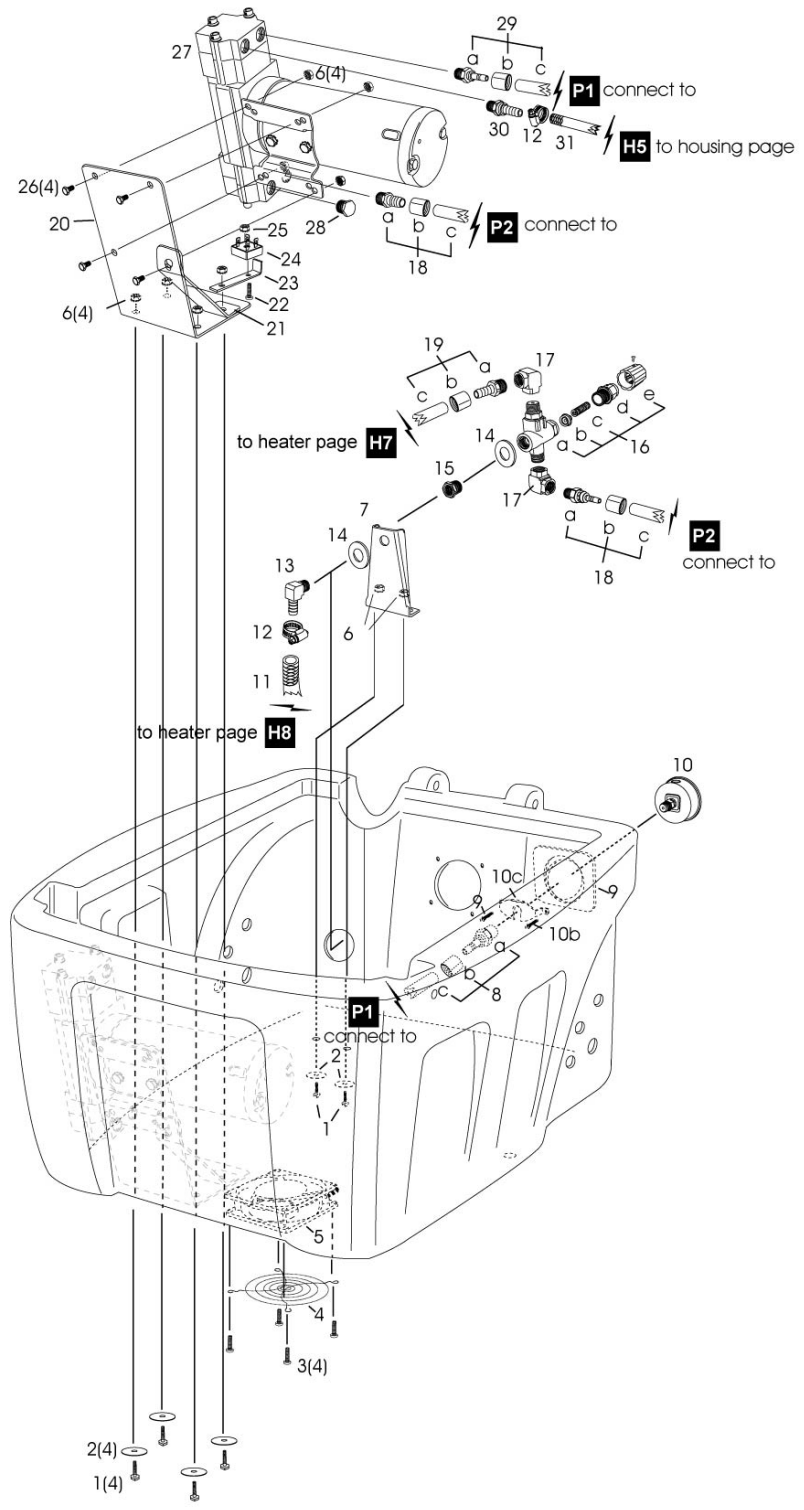


Note: model after 03/08

CF-25XG-HEAT motor page	
2-2 vac motors 500 psi H35 or H39	MAY2012
CF	CleanFreak

CF-25XG-HEAT pump page	
2-2 vac motors 500 psi H35 or H39	MAY2012
CF	CleanFreak

Note: model after 03/08



CF-25XG-HEAT
heater page

2-2 vac motors
500 psi
H35 or H39

MAY2012

CF

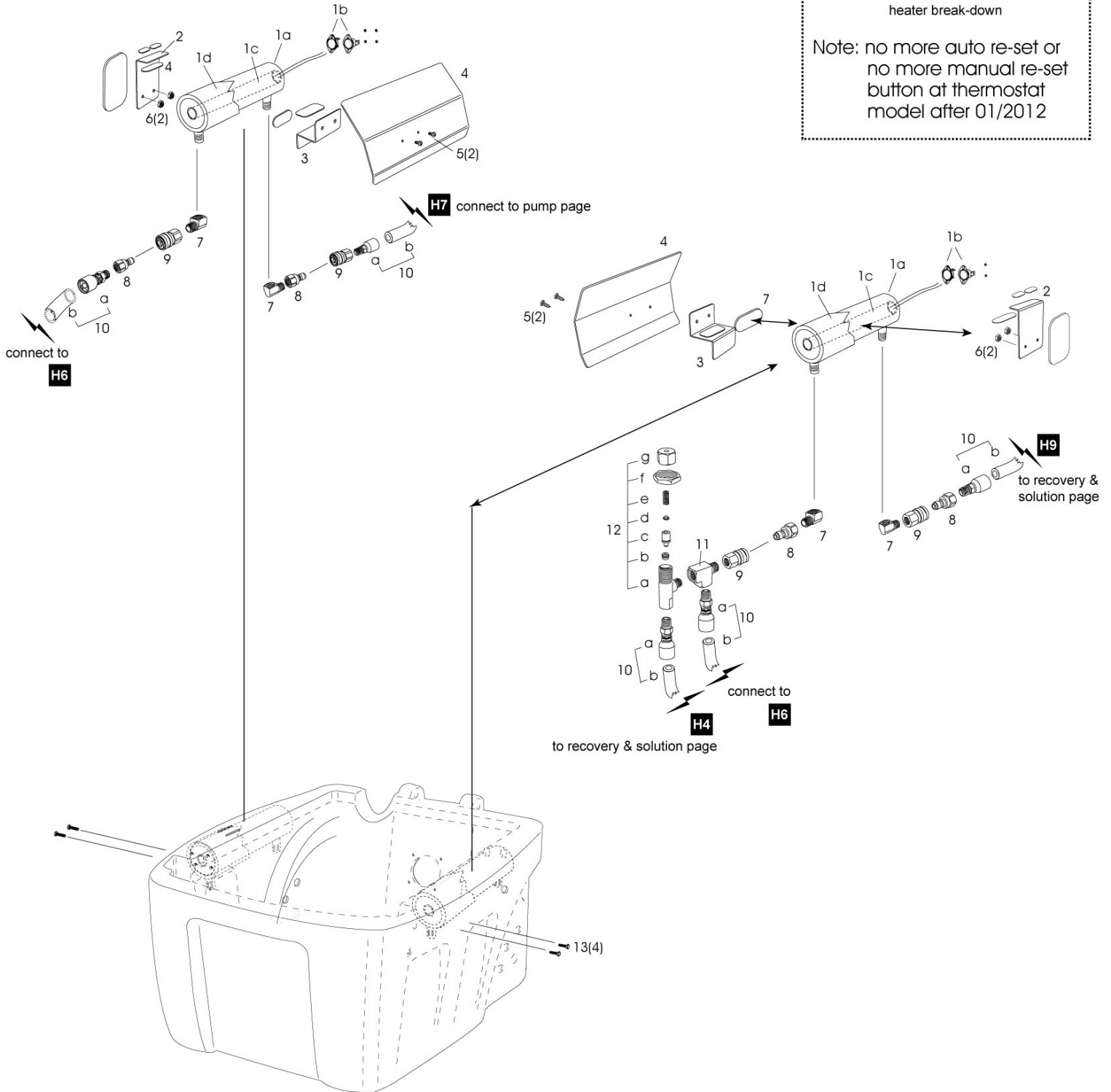
CleanFreak

#1

no more manual re-set button at thermostat

heater break-down

Note: no more auto re-set or no more manual re-set button at thermostat model after 01/2012



CF-25XGH39
 Bottom Housing
 2-2stg Vac Motors
 100-150 PSI
 H39

ITEM No.	PART No	QTY	DESCRIPTION
1	FS07108	2	1/2" AXLE (ROD) END CAP
2	WC161094	2	10X1.75X1/2"NONMARKIWHEEL80CAB
3	FS05081808	1	AXLE(ROD)1/2" X 18-1/2"
4	TC13330895	1	RHINO BASE - GRANITE
5	TE438134	3	COOLING FAN SCREEN
6	FR03604	8	AL/ST 6-4 RIVET
7	FW302316	8	3/16 ALUM. RIVET WASHER AS6R
8	FB023416	2	1/4-20x1 HEX TAPTITE BOLT-ZINC
9	FW552400	2	1/4 PLASTIC CUT WASHER
10	FN1020421	8	1/4X20 KEPS NUT
11	FW302424	8	1/4X1-1/4 ZINC FENDER WASHER
12	TMC6225	1	RHINO EXHAUST
13	FN1021032	5	10X32 KEPS NUT ZINC
14	TP110480	2	RHINO EXHAUST HOLDING BRACKET
B	TP110482	2	RH EXH BRACKET W/ HOSE GUARD
15	FB1032116	5	10-32X1 PH.PAN HEAD ZN
16	FB022688	1	3/8-16x5-1/2 HEX BOLT-ZINC
17	FN1141616	1	3/8 x 16 CENTER LOCK NUT ZN
18	TE101230	2	12-3SJTW-A POW.CORDX25"W/15M.P
19	TE101500	2	CORD RETAINER (COMPLETE)
20	TP111430	2	3/8 AXLE HOLDER/PWR CORD HLDR
21	TMC6228	1	RHINO BASE REINFORCE PLATE
22	WC120263	2	3"X1"NON MARKING SWIVEL CAST.*
23	FB022412	6	1/4-20 x 3/4 HEX BOLT-ZINC
24	FB022416	2	1/4-20 x 1 HEX BOLT-ZINC

CF-25XGH39
 Solution and Recovery Tank
 2-2stg Vac Motor
 100 or 150PSI
 H39

ITEM No.	PART No.	QTY	DESCRIPTION
1	TC13320695	1	RHINO SOLUTION TANK - GRANITE
2	TMC6131	1	RHINO SOLUTION TANK LID
3	TPW20820	1	STAND PIPE BASE S/S WASHER 2-1
4	TB231602	1	1-1/2" X 3/16GASKET(THICK)
5	TB436212	1	REDUCING/M ADT1-1/2MPTx1-1/4SO
6	PM2320164	1	STAND PIPE 2"O.D.#G (16-1/2")
B	PM23202152	1	2" STAND PIPE& DUCKING CPUPLIN
7	ID67321	1	1/2 SS BN,SS, 1-9/16 TO 2-1/2
8	PM10142	1	BALL FLOAT DUCT ONLY
9	PM10144	1	BALL FLOAT CAGE W/BALL
10	PM10150	1	VACUUM FILTER(BALL-FLOAT)
11	TC13311795	1	RHINO RECOVERY TANK -GRANITE
12	FN1110420	2	1/4X20 S/S NYLON LOCK NUT
13	FW302300	4	1/4 S/S U.S.S. CUT WASHER
14	FB021428	2	1/4-20X1-3/4 HEX BOLT 18-8 S/S
15	TB231715	1	90DEG.ELBOW 1.5SPIG X 1.5FPT
16	DB10116	1	MOBIL LASTIC TAPE 1/16X1FT.
17	FB9010808	6	#8-18 x1/2 TRUSS PHIL SCREW S/
18	TMC6010	1	RHINO REC. TANK LID COMPLETE
B	TMC6011	1	RHINO REC. TANK LID ONLY
19	TB231601	1	1-1/2" X 1/8 GASKET(THIN)
20	TB231516	1	1.5"HOSE BARB W/FLANGE BLACK
21	129HB64	1	90 DEG. HB(HOSE X MPT)3/8X1/4
22	222P44	1	ADAPTER 1/4MPTX1/4FPT
23	FW552910	2	9/16 PLASTIC CUT WASHER
24	TMC6206	1	RHINO SWITCH PLATE W/6 CUT OUT
25	FB1032108	7	10-32X1/2PH.PAN HEAD ZN
26	FW302316	6	3/16 ALUM. RIVET WASHER AS6R
27	TE202012	5	CV/ON-OFF ROCKER SWITCH (TMI)
28	TE202019	1	MOMEN RCKR SWCH N.O(1"X.5")
29	TE210112	1	LED 2 CIRCUIT INDICATING LIGHT
30	BH2-6020	1	QUICK CONNECTOR
31	ID57060	5	H.C.1/2 SS BN,PLT,3/8TO7/8
32	THB4474143	1	SOL.AsNB1/4x47"1/4MPTx1/4SMPT
33	TB435010	1	1" FEMALE ADAPTER x SLIP
34	MS30G322	1	O-RING FOR RHINO
35	TB436133	1	1-1/2" HOSE BARB x 1" MPT
36	THD150016	1	1.5"x16" DRAIN TUBE
37	FB022424	2	1/4-20X1-1/2 HEX BOLT-ZINC
38	FW302400	4	1/4 U.S.S. CUT WASHER ZINC
39	TV151194	1	1-1/2" WIRE BRAID INTRNL VAC H (27")
40	ID57200	2	1/2 SS BN5/16PLT, 3/4 TO 1-3/4
41	TB261510	1	1-1/2" 90 DEG.HOSE BARBX1.5FPT
42	FN1020421	2	1/4X20 KEPS NUT
43	TSP10402	3	1/4FPTx1/4FPT SPIN FITTING

44	N6MEB4	3	90DEG.H.B.3/8HOSEX1/4MPT WH.NY
45	THB4414300	2	Sol.AsNB1/4x41"1/4SVMxNOEND
46	TH3630899	1	3/8"SOLUTION HOSE x 39"
47	215PN4	1	CLOSE NIPPLE 1/4
48	TF101050	1	FILTER SCREEN S/S 50MESH 1/4FT
49	TE205314	1	LEVEL SWITCH-K
	A TE205316	1	LEVEL SWITCH CLIP
	B TE205315	1	LEVEL SWITCH FLOAT
	C TE205317	1	LEVEL SWITCH STEM
	D TP410102	1	LEVEL SWITCH PROTECTOR BASE
50	209P42	1	BUSHING 1/4 X 1/8

CF-25XG39
MOTOR PAGE
2-2stg VAC MOTOR
100 OR 150 PSI

ITEM No.	PARTS No.	QTY	DESCRIPTION
1	11660033-A/C	1	120V/5.7 2STG 93" W/STRG ADAP
b	11660033-C/C	1	120V/5.7 2STG 93" W/1.5" STRA
2	ID57320	3	1/2 SS BN,PLT, 1-9/16 TO 2-1/2
3	TV200294-18	1	2" VACUUM HOSE x 18"
4	FB022412	4	1/4-20X3/4 HEX BOLT-ZINC
5	FW302424	8	1/4X1-1/4 ZINC FENDER WASHER
6	FN1020421	4	1/4X20 KEPS NUT
7	TP201211	2	MOTOR STRAP HOLDING BRACKET
8	TP400401	4	MOTOR CLAMP 5.7-2 STAGE MOTOR
9	TP400405	2	VAC STRAP GUARD
10	ID57200	1	1/2 SS BN5/16PLT, 3/4 TO 1-3/4
11	TV151194	1	1-1/2" WIRE BRAID INTERNAL VACUUM HOSE GRAY
12	FT010204BLK	4	HOSE TIE SOLID 4" BLACK
13	FT010112	12	HOSE TIE BLACK 11" LADDER
14	TH3630899-38	1	3/8"SOLUTION HOSE x 38"

CF-25XGH39
Pump
2-2stg Vac Motor
500 PSI
H39

ITEM No.	PART No.	QTY	DESCRIPTION
1	FB022416	6	1/4-20X1 HEX BOLT-ZINC
2	FW3020450	6	1/4 SAE WASHER PLT
3	FB032420	4	10-32 X 1-1/4 PH.PAN HEAD S/S
4	TE438134	1	COOLING FAN SCREEN
5	TE436333	1	COOLING FAN 240V 3.5"
6	FN1020421	10	1/4X20 KEPS NUT
7	TP500520	1	UNLOAD VALVE BRACKET/MV-520
8	PFN204904	1	1/4HOSE X 1/4FPT SOLID FEMALE
9	RP0408305	1	PRESSGAUGE MOUNT BRAKT POLYPLT
10	GA101000	1	PRESSURE GAUGE 0-1000 PSI. 2"*
B	TP110451	1	PRESSURE GAUGE BRACKET
11	THB8370000	1	1/2I.D.POL SPRIN CLEAR HOSEx37
12	ID62020	2	5/16 S/SBAND 1/4HEX HD.1/4-5/8
13	129HB84	1	90DEG.HOSE BAR(HOSExMP)1/2x1/4
14	FW3020822	2	1/2X1-3/8 ZINC FENDER WASHER
15	209P64	1	BUSHING 3/8 X 1/4
16	MV520-50	1	UNLOADER VALVE, 3.5 GPM, 500 P
17	2200P66	2	90DEG.ELBOW 3/8FPTX3/8FPT
18	PFN206206	2	3/8HOSE X 3/8 MPT SWIVEL MALE
19	TGC04-4X6	1	1/4HOSE x 3/8MPT SWIVEL MALE
20	TP1175400	1	500PSI PMP MOUNT BRCKT-A/PT207
21	TP0510016	1	500PSI PMP MOUNT BRCKT-B/PT207
22	FB1032112	1	10-32X3/4 PH. PAN HEAD ZN
23	TP0308011	1	RECTIFIER MOUNTING BRACKET
24	TE620350	1	RECTIFIER 35 AMP (PW & FM)
25	FN1021032	1	10X32 KEPS NUT ZINC
26	FB022408	4	1/4-20X1/2 HEX BOLT-ZINC
27	PT207-DC	1	500 PSI MAX. 1GPM PUMP
28	218P6	1	HEX PLUG 3/8
29	TGC04-4X6	1	1/4HOSE x 3/8MPT SWIVEL MALE
30	125HBL86	1	HOSE BARB(HOSE X MPT)1/2 X 3/8
31	TH7160080-73	1	1/2"I.D. POL.SPRING CLEAR HOSE 73"

CF-25XGH39
 HEATER PAGE
 2-2stg VAC MOTORS
 100 OR 150 PSI
 H39

Item No.	Part No.	Qty	Description
1	H39	1	
A	TE227100	2	H-5100ELEC TUBE HEATER 1000WATT
B	TE206212	4	THERMO DISK SENSOR 210F
C	TE228100	2	HEATING ROD 1000 WATTS
D	TE22800	2	TUBE HEATER HOUSING W/INSULATI
2	TPE238512	2	ELEC TUBE HEATER BRACKET #RHB
3	TPE23508	2	ELEC TUBE HEATER BRACKET #RHA
4	TPE114110	2	ELEC TUBE HEATER COVER #RH
5	FB5020812	4	#8 X 3/4 PH. TEKS SCREW
6	FN1010420	4	1/4X20 S/S NUT
7	2202P44	4	90DEG.STREET ELBOW 1/4MPTX1/4F
8	BST-N200	4	HIGH FLOW NIPPLE 1/4 FPT
9	BST-2000	4	HIGH FLOW COUPLER 1/4 FPT
10	TGC01-4X4	5	1/4 HOSE x 1/4MPT SOLID MALE
B	TH6400450		1/4" BLUE NEPTUNE 3000
11	2225P4	1	STREET TEE 1/4F X F X MPT
12	PTV0500	1	SAFETY VALVE 0-500PSI HEATER
13	FB021412	4	1/4-20X3/4 HEX BOLT 18-8 S/S